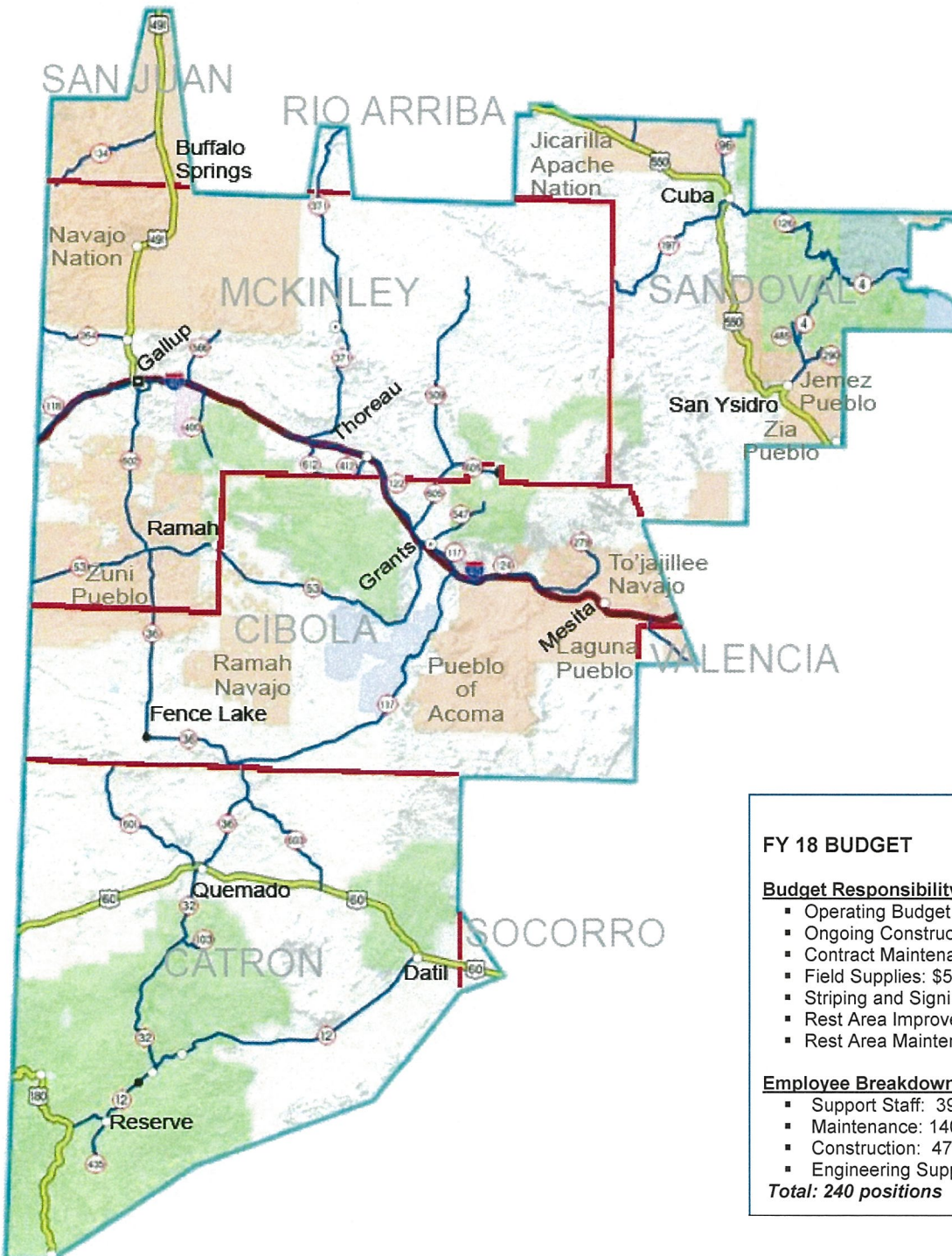


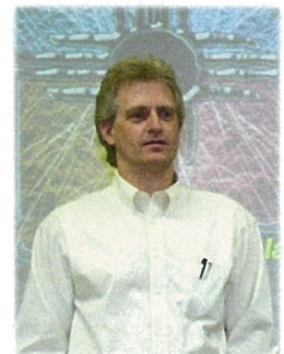


## HTPWC NMDOT DISTRICT SIX June 2018

District Six is located in western New Mexico and encompasses Cibola and McKinley Counties, a majority of Catron and Sandoval Counties, and portions of San Juan, Rio Arriba, Valencia and Socorro Counties. The District also works closely with local and tribal governments.



**Billy Moore**  
Commissioner, District 6



**Larry Maynard**  
District 6 Engineer

### FY 18 BUDGET

#### Budget Responsibility

- Operating Budget: \$16,453,050
- Ongoing Construction Contracts: \$168,702,682.35
- Contract Maintenance: \$6,979,900
- Field Supplies: \$5,857,000
- Striping and Signing: \$1,119,900
- Rest Area Improvements: \$107,900
- Rest Area Maintenance: \$242,000

#### Employee Breakdown

- Support Staff: 39 positions
- Maintenance: 140 positions
- Construction: 47 positions
- Engineering Support: 14 positions

**Total: 240 positions**

**NMDOT D-6 ROADWAYS**

<b>Route</b>	<b>From</b>	<b>To</b>	<b>Lane Miles</b>
NM 4	San Ysidro	Los Alamos County Line	93
NM 6	I-40, Exit 126	SE of the Cibola/Valencia County Line	36
NM 12	Jct. US 180/NM 12	Datil	148
NM 32	Apache Creek	Quemado	82
NM 36	Quemado	Jct. NM 53/NM 36	144
NM 53	Arizona State Line	Grants	172
NM 96	US 550 at Cuba	Regina	18
NM 103	Jct. NM 32/NM 103	Quemado Lake	8
NM 117	Jct. NM 117/NM 36	Grants	132
NM 118	Arizona State Line	Iyanbito	102
NM 122	Continental Divide	Grants (Exit 85)	106
NM 124	Jct. NM 117/NM 124 (Skyway)	Laguna	52
NM 126	Cuba	La Cueva	77
NM 134	Sheep Springs	Crystal	45
NM 197	US 550 at Cuba	Torreon	61
NM 264	Arizona State Line	Yah-ta-Hey	65
NM 279	NM 124 at Laguna	Seboyeta	27
NM 290	NM 4	Ponderosa	16
NM 371	I-40 at Thoreau	Lake Valley	61
NM 400	Jct. NM 118/NM 400	McGaffey	21
NM 412	I-40 at Prewitt	Bluewater Lake	12
NM 435	Reserve	Lower San Francisco Plaza	10
NM 485	NM 4	Gilman	8
NM 509	Jct. NM 509/NM 605 (Jay's)	Whitehorse	71
NM 537	US 550	Rio Arriba County Line	10
NM 547	Grants	Mt. Taylor	26
NM 564	Jct. NM 118/NM 564	Jct. NM 602/NM 564	13
NM 566	Church Rock	End of Pavement	23
NM 568	Jct. NM 122/NM 568 (West of Milan)	NMDOT Maintenance Yard (Milan)	2
NM 601	Quemado	Cibola/Catron County Line (Dirt Road)	54
NM 602	Jct. NM 53/NM 602	Gallup	64
NM 603	Pie Town	NM 36 (Dirt Road)	46
NM 605	Milan	San Mateo	44
NM 606	Jct. NM 122 (West of Grants)	End of Pavement (Bluewater)	2
NM 608	9 <sup>th</sup> Street (Gallup)	9 <sup>th</sup> Street (Gallup)	8
NM 609	Maloney Street (Gallup)	Maloney Street (Gallup)	10
NM 610	2 <sup>nd</sup> Street (Gallup)	2 <sup>nd</sup> Street (Gallup)	8
NM 612	I-40 at Thoreau	Bluewater Lake	26
NM 615	Horizon Boulevard (Milan)	Horizon Boulevard (Milan)	3
US 60	Arizona State Line	VLA (Very Large Array)	186
US 180	Arizona State Line	Alma	95
US 491	I-40 at Gallup	Little Water	271
US 550	North of Bernalillo	North of San Ysidro	376
Other Routes	Frontage Roads/Interchanges	Frontage Roads/Interchanges	56
I-40	Arizona State Line	To'hajilee	528
<b>TOTAL LANE MILES</b>			<b>3,418</b>

# MAINTENANCE ACTIVITIES & ACCOMPLISHMENTS

## Maintenance Challenges

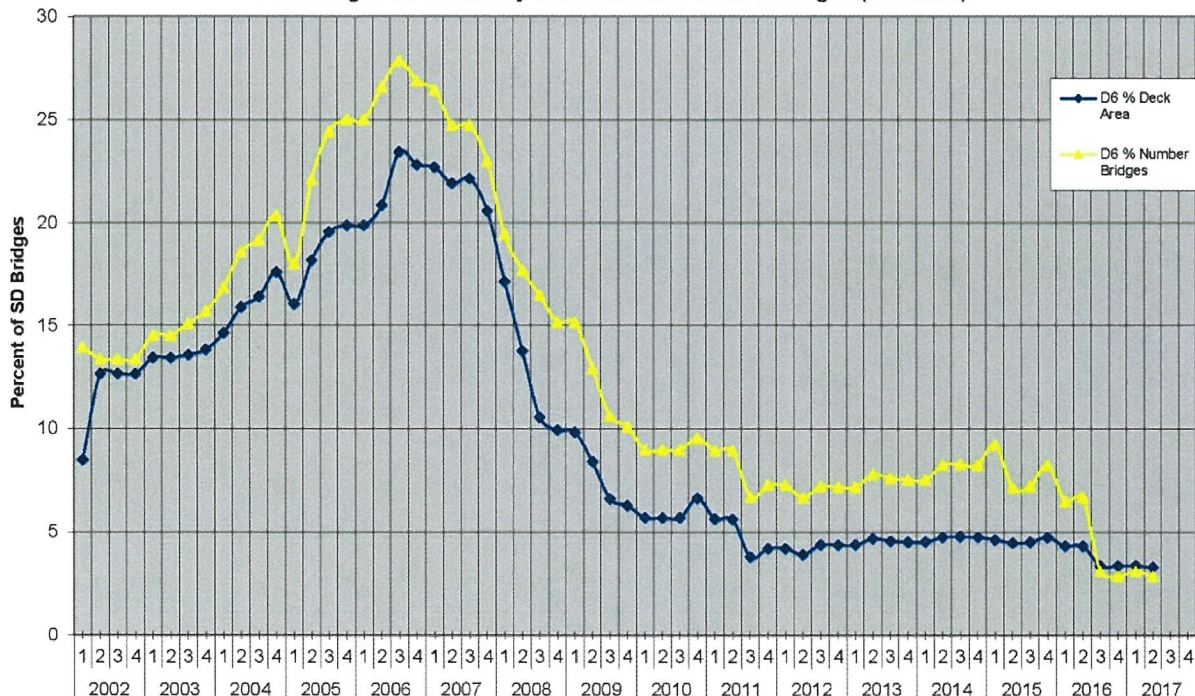
- **Maintenance of I-40:** The challenge for District Six is to maintain I-40 for the traveling public and freight hauling at a high level of service. There are between 10,000 and 15,000 heavy trucks utilizing this roadway daily, along with an equal amount of automobiles. The District maintains 528 lane miles of interstate.
- **Snow Removal Operations:** The District is centered along the Continental Divide. This brings heavy winter storms, which require snow removal operations, and takes its toll on personnel, equipment and supplies.
- **Maintenance of Secondary Roads:** Along with maintaining I-40 and its inherent heavy traffic volumes, the District maintains 2890 lane miles of secondary roads in McKinley, Cibola, Catron, Sandoval and portions of San Juan, Rio Arriba, Valencia and Socorro counties.
- **Urban Growth in a Rural District:** The Municipality of Gallup is growing continuously and development has exceeded the infrastructure. Congestion and limited access are the result.



Maintenance Activities FY 18		
Emergency Repairs/Clean-up	3,443.0 man hours	\$ 196,813.19 (District Wide)
Snow & Ice Removal	75,611.56 pass miles	\$ 1,666,114.30
Erosion Repair	5,904.01 cubic yards	\$ 480,937.02 (District Wide)
Pothole Patching	479.70 cubic yards	\$ 449,681.91
Blade Patching	7,517.20 cubic yards	\$ 1,400,019.34
Fog Sealing	244.80 lane miles	\$ 453,553.56
Chip Seal	137.53 lane miles	\$ 1,615,584.26
Bituminous Paving/Milling	15.94 lane miles	\$ 1,466,417.89
Drainage Structure Cleaning	1,541.0 cubic yards	\$ 61,389.48
Mowing	5,192.77 pass miles	\$ 385,361.56
Litter Pick-up	7,161.0 man hours	\$ 257,299.33
Graffiti Removal	339.65 square feet	\$ 1,881.63
Guardrail Install/Replace	3,409.0 linear feet	\$142,718.47
Fence Maintenance	10,034.75 man hours	\$ 282,303.04



**Percentage of Structurally Deficient State Owned Bridges (District 6)**



### BRIDGE PROJECTS

Projects Under Construction			
Scope of Work	Location	Bridge Cost	Total Project Cost
Roadway Reconstruction, I-40 and NM 122 Interchange	I-40, Exit 47	\$1,220,160.00	6,950,000.00
Bridge Replacement & Roadway & Ramp Reconstruction	I-40, Exit 96/NM 124	\$1,636,404.43	\$12,485,701.53
Roadway Reconstruction & Bridge Replacement	NM 6, MP 0.272-18.475	\$1,383,945.00	\$30,929,334.80
Bridge & Roadway Rehabilitation	I-40 Exit 79	\$1,303,812.00	\$3,130,971.00
Bridge Replacement & Roadway Reconstruction	NM 602, MP 24.069-24.296	\$1,674,648.00	\$3,902,015.00
Bridge Rehabilitation & Roadway Reconstruction	I-40, MP 37.600-42.800	\$1,524,965.00	\$17,200,000.00
Projects Completed In FY 2018			
Scope of Work	Location	Bridge Cost	Total Project Cost
Bridge Replacement	NM 4, MP 17.538-18.319	\$1,010,510.00	\$2,149,915.53
FY 2019 STIP			
Scope of Work	Location		Total Estimated Project Cost
Bridge Rehabilitation	NM 53 MP 85.8		\$2,768,483
Bridge Rehabilitation	I-40 M.P 35		\$1,550,000
Bridge Replacement and Interchange Reconstruction	I-40 Exit 44		\$13,000,000
Bridge Replacement	I-40 MP 4.9		\$16,000,000



### CONSTRUCTION ACTIVITIES AND ACCOMPLISHMENTS

Ongoing Projects	Total Project Cost	Completed Projects	Total Project Cost
Roadway Reconstruction, I-40 and NM 122 Intersection	\$6,950,000.00	Roadway, New Construction on US 491, South of Sheep Springs	\$13,549,658.90
Roadway New Construction on US 491 in McKinley County	\$73,645,000.00	Bridge Replacement on NM 4 in Sandoval County	\$2,149,915.53
Roadway Reconstruction on NM 564 in McKinley County	\$2,612,857.00	Sign Replacement on NM 566 & NM 400 in McKinley County	\$73,213.50
Bridge Replacement & Roadway & Ramp Reconstruction on I-40/NM 124 in Cibola County	\$12,485,701.53		
Roadway Reconstruction & Bridge Replacement on NM 6 in Cibola & Valencia County	\$30,929,334.80		
Bridge & Roadway Rehabilitation on I-40 in Cibola County	\$3,130,971.00		
Bridge Replacement & Roadway Reconstruction on NM 602 in McKinley County	\$3,902,015.00		
Signalization, Lighting & Roadway Reconstruction on NM 608/W. Jefferson in McKinley County	\$418,564.00		
Roadway Rehabilitation on NM 117 in Cibola County	\$2,146,024.50		
Bridge Rehabilitation & Roadway Reconstruction on I-40 in McKinley County	\$17,200,000.00		

**PROJECTS IN THE ENGINEERING & DEVELOPMENT STAGE (FY 2018 – FY 2021)**

Description/Termini	Funded Amount	Description/Termini	Funded Amount
I-40, MP 120.3 – Bridge Preventive Maintenance Project	\$5,855,000	I-40, MP 8.25 – 16.88 – Guardrail Project	\$2,300,000
I-40, MP 39.8 – 42.5 – (Phase I) Interchange Reconstruction + EB Lanes	\$7,162,043	I-40, MP 116.4 – 131.20 – Guardrail Project	\$1,935,000
I-40, MP 39.8 – 42.5 – (Phase II & III) Interchange Reconstruction + WB Lanes	\$16,000,000	I-40, MP 104.8 – 116.2 – Guardrail Project	\$2,730,000
NM 4, MP 18.72 – Bridge Replacement	\$5,918,999	NM 612, MP 8.4 – 10.6 – Replace Existing CMP Crossings	\$2,607,608
NM 12, MP 6.9 – 7.1 – New Turnout Installation Nash, Reserve, NM (ROW)	\$20,000	I-40, MP 119 – Bridge Preservation	\$1,469,777
US 60, MP 18 – 24 – Pavement Preservation, Full Depth Reclamation (FDR)	\$2,855,070	I-40, MP 22 – Bridge Preservation	\$2,300,000
NM 371, MP 16 – 23 – Nova Chip (Maintenance Project)	\$822,496	I-40, MP 38.0 – 39.9 – (Phase IV) Interchange Reconstruction EB/WB Lanes	\$8,551,816
US 491/US 550, Multiple Locations – Striping (Maintenance Project)	\$190,216	I-40, MP 9.2 – 16.0 – Pavement Preservation	\$9,500,000
US 491 MP 62 – 67 – Full Depth Reclamation (FDR)	\$11,600,000	NM 53, MP 16 – 17 – Drainage Remediation	\$1,592,750
I-40, MP 58 – 60 Roadway Reconstruction	\$8,551,816	NM 53, MP 85.8 & 85.6 – Bridge Preventive Maintenance	\$2,768,483
NM 566, MP 0.2 – Bridge Rehabilitation	\$7,373,616	US 550, MP 64.62 – Bridge Preventive Maintenance	\$900,000
NM 124, MP 25.47 – Bridge Preventive Maintenance Project	\$2,086,963	NM 371, MP 14.5 – 15.5 – Drainage Erosion Mitigation	\$1,020,600
I-40, MP 35 – Bridge Preventive Maintenance Project	\$1,550,000	NM 118, MP 18 – 19 – Arnold Intersection Drainage Repair	\$884,943
I-40, MP 44 – Bridge Replacement, Interchange Reconstruction	\$13,000,000	Various Locations, Stockpile Aggregates	\$2,000,000
I-40, MP 4.4 – 5.4 – Bridge Replacement	\$16,000,000	Guardrail Projects, Design Funding	\$677,000
Bridge Preventative Maintenance, Design Funding	\$1,800,000	NM 566 Bridge Rehabilitation, Design Funding	\$170,000

**CRITICAL NEEDS**

Description/Termini	Estimated Project Cost
NM 264, Roadway Reconstruction, East of Gallup (MP 10 – 16), length 6.0 miles	\$12,000,000
I-40, Roadway Reconstruction (MP 18 – 22), length 3.0 miles	\$16,500,000
NM 53 Drainage (MP 18.5 – 19.5), NEW project broken out of CN 6101091	\$2,500,000
NM 118, Design and Construct Drainage Improvements (MP 28 – 37)	\$23,300,000
I-40, Pavement Preservation (MP 108.3 – 114.8)	\$8,400,000
US 60, Pavement Preservation, FDR (MP 18 – 24) (2nd Priority for US 60)	\$4,000,000
Old 66, Suwannee Bridge #0002 Replacement, (just off of NM 6 mp 2.1)	\$12,000,000
I-40, Reconstruction (MP 58 – 60) (3D Model)	\$8,000,000
I-40 Exit 108 Interchange (MP 108)	\$18,000,000
US 491, Roadway Reconstruction (approx. MP 24.5 – 36.9)	\$15,000,000
US 491, Roadway Reconstruction (approx. MP 60.65 – 67.7)	\$12,000,000

